

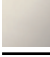





TARA Single-lever mixer with profi spray set - Chrome

ST 110 109 2888



- 235mm projection
- pivotable spout 360°
- air-enriched flow and spray flow
- height of mixer 400 mm
- test
- height up to aerator 230 mm
- single-lever mixer hole diameter 35 mm
- profi spray hole diameter 30mm
- 2 x pressure hose with 3/8" cap nut
- automatic spout/shower diverter
- sprayface with anti-scaling system
- max. flow 5.7 l/min at 3 bar flow pressure
- suspended spray with stainless steel spring (can be pivoted and locked)
- lead-free
- This product can help a building meet the requirements of Green Building Rating Systems, e.g. LEED®, BREEAM®, DGNB

	Chrome	ST 110 109 2888-00 0010
	Brushed Platinum	ST 110 109 2888-06 0010
	Platinum	ST 110 109 2888-08 0010
	Dark Chrome	ST 110 109 2888-19 0010
	Brushed Chrome	ST 110 109 2888-93 0010
	Brushed Dark Platinum	ST 110 109 2888-99 0010

Individual components of this set

You need the following components for this set



1x 27 789 970-00 0010



1x 33 826 888-00 0010



TARA Single-lever mixer with profi spray set - Chrome

ST 110 109 2888

TARA Single-lever mixer with profi spray set - Chrome

ST 110 109 2888



Fits: ELIO, TARA, TARA ULTRA


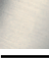
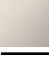



- spray flow
- automatic diverter for spout/Profi spray set
- height of mixer 665 mm
- individual rosette diameter 55mm
- profi spray hole diameter 30mm
- sprayface with anti-scaling system
- suspended spray with stainless steel spring (can be pivoted and locked)
- lead-free

The profi spray can be installed either with or without a rosette

Can only be combined with 32800790, 33826888, 32815888, 20815892, 33826875.

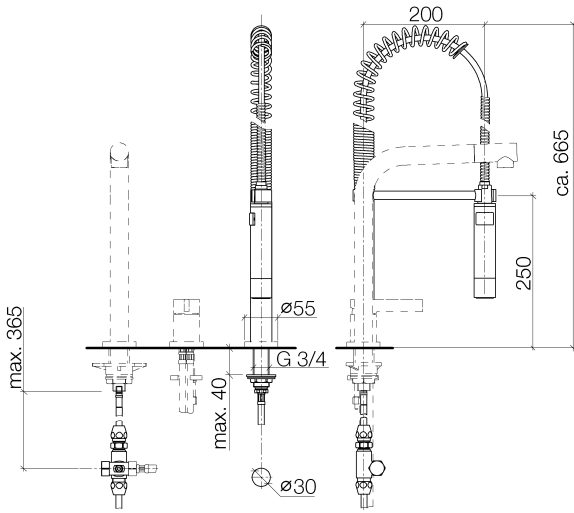
Intrinsic protection against back flow.

Button has to be pressed while using.

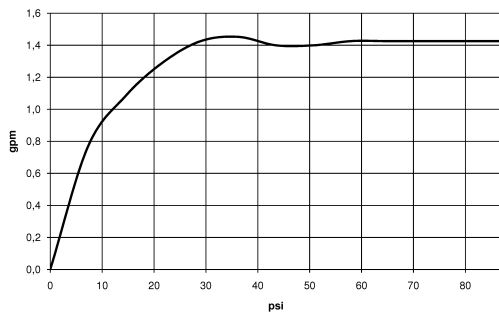
	Chrome	27 789 970-00 0010
	Brushed Platinum	27 789 970-06 0010
	Platinum	27 789 970-08 0010
	Dark Chrome	27 789 970-19 0010
	Brushed Chrome	27 789 970-93 0010
	Brushed Dark Platinum	27 789 970-99 0010

TARA Single-lever mixer with profi spray set - Chrome

ST 110 109 2888



Flow rate chart



Codes & Standards

NSF/ANSI 372

Certificates

IAPMO_6397.

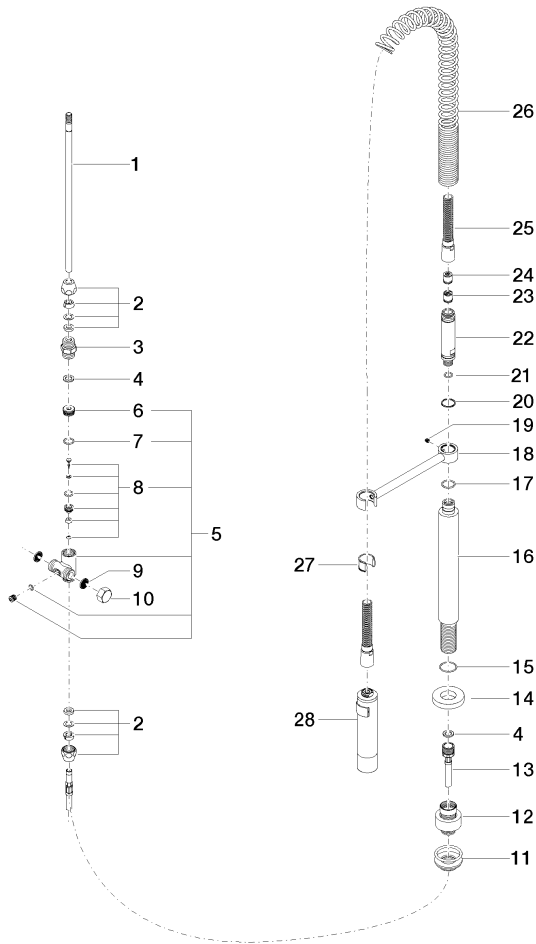


TARA Single-lever mixer with profi spray set - Chrome

ST 110 109 2888

TARA Single-lever mixer with profi spray set - Chrome

ST 110 109 2888



- 235mm projection
- pivotable spout 360°
- air-enriched flow
- height of mixer 400 mm
- height up to aerator 230 mm
- single-lever mixer hole diameter 35mm
- 2x US pressure hose, 3/8"
- max. flow 5.7 l/min at 3 bar flow pressure
- lead-free
- This product can help a building meet the requirements of Green Building Rating Systems, e.g. LEED®, BREEAM®, DGNB

Single-lever mixer for combining with rinsing/Profi spray only

	Chrome	33 826 888-00 0010
	Brushed Platinum	33 826 888-06 0010
	Platinum	33 826 888-08 0010
	Durabross (23kt Gold)	33 826 888-09 0010
	Dark Chrome	33 826 888-19 0010
	Brushed Durabross (23kt Gold)	33 826 888-28 0010
	Matte Black	33 826 888-33 0010
	Brushed Champagne (22kt Gold)	33 826 888-46 0010
	Champagne (22kt Gold)	33 826 888-47 0010
	Brushed Chrome	33 826 888-93 0010
	Brushed Dark Platinum	33 826 888-99 0010



TARA Single-lever mixer with profi spray set - Chrome

ST 110 109 2888

TARA Single-lever mixer with profi spray set - Chrome

ST 110 109 2888

Recommended miscellaneous



Profi spray set - Chrome

27 789 970-00
0010

Recommended miscellaneous



Rinsing spray set - Chrome

27 721 970-00

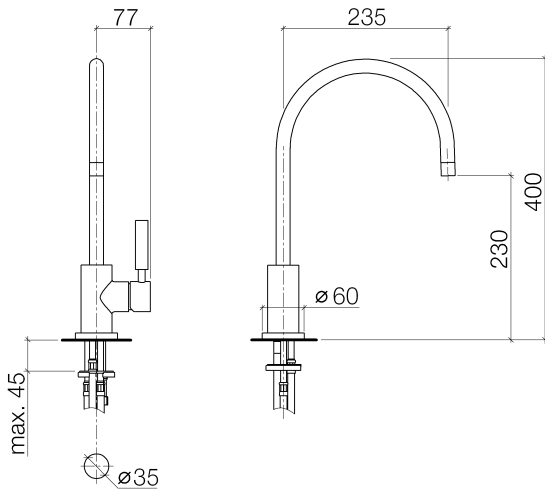


TARA Single-lever mixer with profi spray set - Chrome

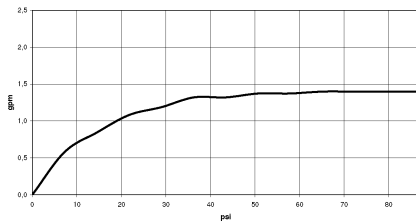
ST 110 109 2888

TARA Single-lever mixer with profi spray set - Chrome

ST 110 109 2888



Flow rate chart



Codes & Standards

ADA	ASME A112.18.1/CSA B125.1	California Energy Commission (CEC)	NSF/ANSI 372
NSF/ANSI/CAN 61			

Certificates

IAPMO_N-4976 (2). IAPMO_4976 (3). IAPMO_6397 (1).

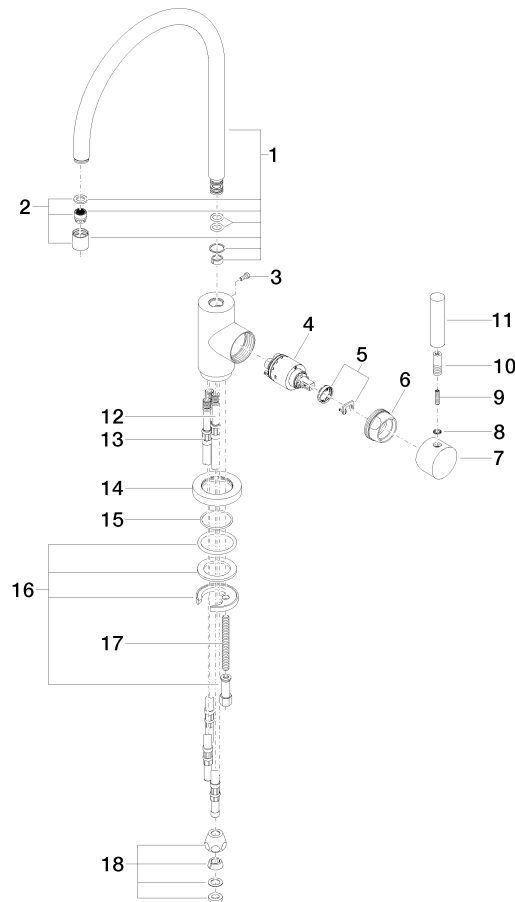


TARA Single-lever mixer with profi spray set - Chrome

ST 110 109 2888

TARA Single-lever mixer with profi spray set - Chrome

ST 110 109 2888



Spare parts list

No.	Item Number	Name	Quantity used	Delivery time
1	90 28 22 049 03-00	spout	1	10
2	90 23 01 028 00-00	aerator	1	10
3	09 30 30 054 90	screw	1	2
4	90 15 05 065 00 90	cartridge	1	2
5	90 28 10 148 00 90	accessories	1	2
6	09 24 04 107-00	nut	1	10
7	90 20 88 040 00-00	handle	1	10
8	90 30 11 032 00 90	disc	1	2
9	09 31 11 010 90	pin	1	2
10	90 24 04 048 00-00	nipple	1	10
11	11 170 880-00	handle	1	10
12	04 30 04 064 00 90	hose	1	60
13	04 30 04 044 00 90	hose	2	60
14	09 28 10 055-00	rosette	1	10
15	09 14 10 034 90	seal	1	2
16	04 30 11 038 00 90	fixing set	1	2
17	09 31 11 011 90	pin	1	2
18	90 23 30 040 00-00	threaded connector	1	10